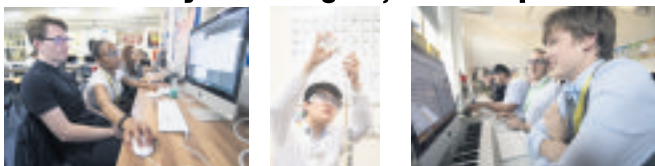




# WOODBIDGE HIGH SCHOOL

## 6th Form Enrolment

Thursday 22nd August, 9am – 4pm  
Friday 23rd August, 9am – 1pm



Woodbridge High School's Sixth Form is a top performing institution and offers:

- An extremely wide range of academic, vocational and enrichment courses
- Excellent teaching and outcomes
- A full induction and transition programme
- Outstanding facilities including private study areas, café and gym
- Comprehensive enrichment and community programmes
- A well-supported UCAS and careers programme
- A unique range of A Levels including Music, Drama, Design Technology, French, German, Russian and Spanish
- Excellent pastoral care

[www.woodbridgehigh.co.uk](http://www.woodbridgehigh.co.uk) Twitter: @woodbrhigh

St Barnabas Road, Woodford Green, IG8 7DQ

Please enter via the Wynndale Entrance on St Barnabas Road for enrolment  
(by the zebra crossing)

External students without an appointment should attend on Friday to enrol

## WOODBIDGE HIGH SCHOOL STUDENTS CELEBRATE EXCELLENT RESULTS!



### Academic Success and Destinations

Sixth form students at Woodbridge High School celebrated another year of being amongst the borough's best 16-18 providers last Thursday.

73% of A Levels taken were graded A\*-C, with the vast majority of students receiving offers to the university of their choice, including top third and Russell Group universities, apprenticeships or alternative training or education.

Among the top performers were Lucie Malpas, who achieved three A's, Scarlet



House (A\*AA) and Hannah Teague (A\*AA), who will study Zoology at the University of Manchester, History at the University of Nottingham and Biology at the University of Oxford respectively. Both Jonathan Miller and Akshay Polra achieved three A grades and will continue their studies at Bristol University and the London School of Economics.

This year's results continue a year-on-year trend of outstanding results, with an increase in the number of entries at A\*, A and B at A Level, but also in vocational courses, reflecting the expertise in teaching and learning on offer.

There was a 100% pass rate in vocational Level 3 courses, including 48% of entries being graded as 'Distinction' or 'Distinction Star' and 77% of entries graded between 'Distinction Star' and 'Merit'. Eleni Barlow, Aaron Russell and Nicole Thelwall were the top achievers and have secured places at university or employment.

### Support and Care

Students at Woodbridge High School receive an excellent level of care and support throughout their studies. Each student has a dedicated form tutor and has one-to-one tutorials



and fortnightly form periods to offer them bespoke advice and support as part of a comprehensive tutorial programme. In addition, there is a dedicated Sixth Form pastoral team, including access to counsellors and mentors. Students also benefit from an innovative range of Enrichment sessions, with an impressive range of speakers and experts coming into the school to present to Sixth Form students. In addition, students receive extensive career and higher education guidance.

Students' progress, attitude and attendance are monitored rigorously and students are challenged and supported to fulfil their maximum potential. At the start of their studies, students enjoy a full induction and transition programme before lessons begin.

Students enjoy their own space in our Sixth Form area, which has two large study rooms, a social area and a café. The school also boasts new facilities, such as a new canteen, state-of-the-art music, computing and drama facilities, and an impressive gym.

For more information: [www.woodbridgehigh.co.uk](http://www.woodbridgehigh.co.uk) Twitter: @woodbrhigh St Barnabas Road, Woodford Green, IG8 7DQ. Email enquiries: [gsamuels@woodbridgehigh.co.uk](mailto:gsamuels@woodbridgehigh.co.uk)

### Provision and Facilities

We have a tremendous breadth of subjects on offer: A Levels in

27 subjects including a unique borough provision in Modern Languages (Russian, German, French and Spanish), the arts (music and theatre studies) and a range of Level 2 and 3 vocational courses. Students in year 12 also complete an extra course to give them an edge, such as Debating, Sports Leaders, the Extended Project Qualification, AS Level Maths Studies, the Pixl Edge, or the Duke of Edinburgh Award.



Students enjoy their own space in our Sixth Form area, which has two large study rooms, a social area and a café. The school also boasts new facilities, such as a new canteen, state-of-the-art music, computing and drama facilities, and an impressive gym.

For more information: [www.woodbridgehigh.co.uk](http://www.woodbridgehigh.co.uk) Twitter: @woodbrhigh St Barnabas Road, Woodford Green, IG8 7DQ. Email enquiries: [gsamuels@woodbridgehigh.co.uk](mailto:gsamuels@woodbridgehigh.co.uk)

**CONGRATULATIONS** on your GCSE results!

What's Next? What's Next?

APPLICATIONS STILL BEING ACCEPTED FOR SEPTEMBER 2019  
apply online at [www.eppingsjohnsschool.org](http://www.eppingsjohnsschool.org)

a broad curriculum high quality teaching & learning  
outstanding pastoral care and guidance  
a range of enrichment programmes  
strong links to universities and apprenticeships  
small class sizes a close community  
excellent transport links

OPEN EVENING FOR SEPTEMBER 2020 INTAKE  
12th November 2019  
6pm - 9pm

@eppingsjohns @esj6form @eppingsjohns

YOUR PATH TO AN EXCEPTIONAL FUTURE

EPPING ST JOHN'S SIXTH FORM

[eppingsjohnsschool.org](http://eppingsjohnsschool.org)

## The best set of results at Epping St John's Sixth Form



The class of 2019 achieved the best set of A-level and BTEC results in the history of Epping St John's Church of England School.

Every Year 13 student – 100 per cent – achieved at least a Pass in either an A-level or BTEC course this summer.

Fulin Baki, head of sixth form, said: "I am delighted with this year's A-level results. The students' hard work and dedication over the last seven years has shown in their achievements and today we are celebrating their reward."

"Many of our students have achieved places at their university of choice and some have exceeded expectations."

"I am wishing all students the best in their future and I am looking forward to celebrating success again in years to come."

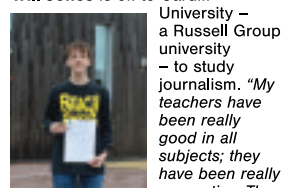
Mike Yerosimou, head of school, said: "These results go to show that hard work from students coupled with dedicated and passionate teaching staff really is the recipe for success."

"I must also mention the exceptional achievements in our vocational courses and BTECs. We are an inclusive sixth form and our mixed pathway of A-level and BTEC really has allowed many of our students to succeed."

"Everyone at Epping St John's is delighted that 100 per cent of our students achieved at least a Pass in either an A-level or BTEC qualification."

What our students said...

Will Jones is off to Cardiff



University – a Russell Group university – to study journalism. "My teachers have been really good in all subjects; they have been really supportive. The small classes sizes have meant we have built up good bonds with our teachers."



Cleo Doncaster is off to Anglia Ruskin University to study adult nursing. "My health and social care teacher Mrs Marshall has lots of experience and so was really helpful. She gave me mock interviews and asked really difficult questions, so when I got to the university the real thing seemed a lot easier."

Chloe Kyriacou will study English literature at University of Sussex. "My teachers have been very, very supportive and helpful – even today, helping me to understand my grades. My experience of sixth form has been great; I could not have asked for more."



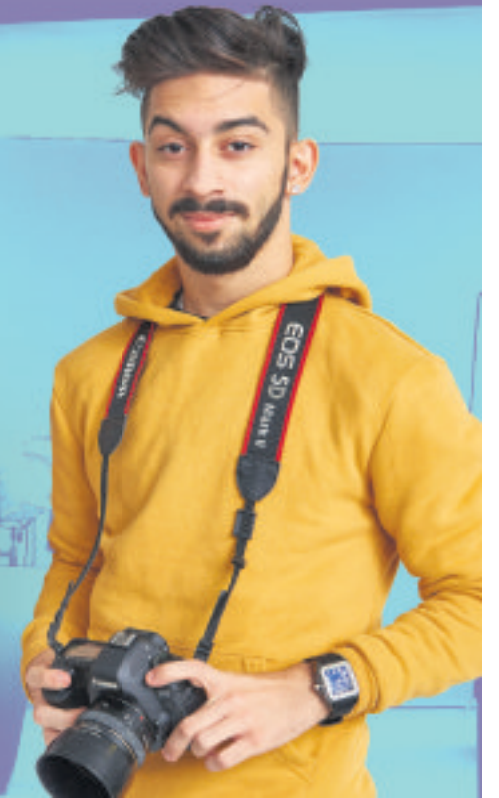
Madeline McLean will study fine art at Lancaster University, which includes a placement year. "I could always be open and honest with my teachers. They picked up on how we were coping. Teachers would pull us to one side if they felt we weren't ourselves to check we were ok. It was great to feel we weren't alone and didn't have to be the ones going to them for help."





# Your Career Starts at New City College

## ENROLLING FROM 22 AUGUST



[WWW.NCCLONDON.AC.UK/ENROLMENT19](http://WWW.NCCLONDON.AC.UK/ENROLMENT19)

**020 8502 8778**

BORDERS LANE, LOUGHTON IG10 3SA



# YOUR PATH TO AN EXCEPTIONAL FUTURE

## WE ARE STILL ACCEPTING APPLICATIONS FOR SEPTEMBER 2019

- a broad curriculum
- high quality teaching & learning
- outstanding pastoral care and guidance
- a range of enrichment programmes
- strong links to universities and apprenticeships
- small class sizes
- a close community
- excellent transport links

### APPLY ONLINE

[eppingstjohnsschool.org](http://eppingstjohnsschool.org)

/eppingstjohnsschool

@esj6form

@eppingstjohns



Supporting professional development through the Epping Forest and Essex 1000 initiative. We're growing local industry that will prosper our economy, create new jobs and improve our environment.